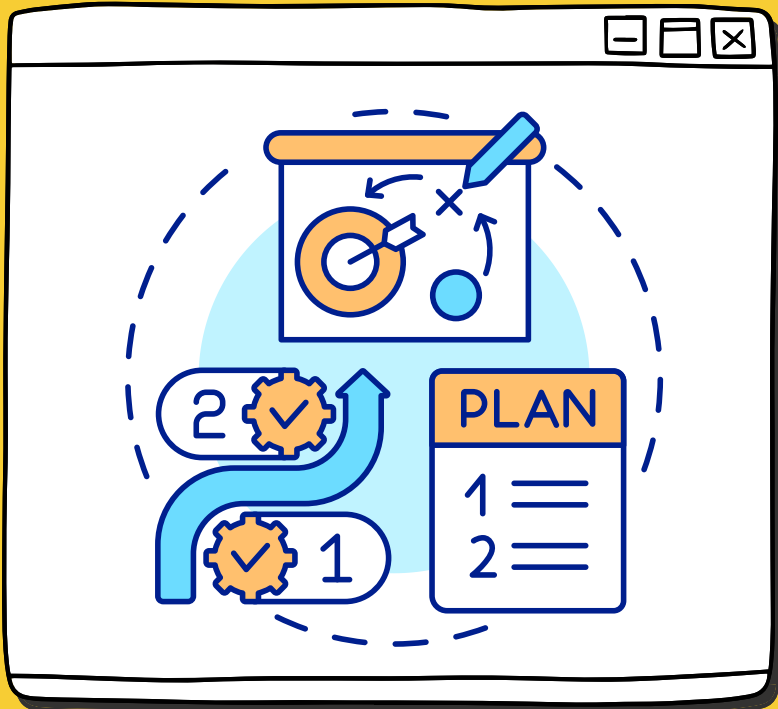


# How-To Write a PHENOMENON-BASED LEARNING LESSON PLAN

## ① PRE-PLAN

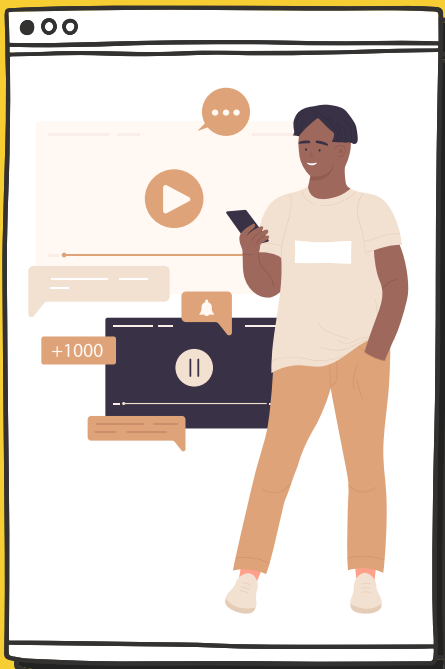


Determine what your students need to learn. If your school system uses **NGSS** as the basis for their curriculum, then your job is a tad simpler. If not, you'll need to attach what needs to be learned to an **NGSS Performance Expectation**.

## ② FIND A PHENOMENON

Search your mind, books, the internet, and anything else you can think of to find a **phenomenon** related to what needs to be taught. This process may prove tedious initially, but with practice it gets easier.

## ③ CONTENT CREATION



After you've settled on a **phenomenon** to center your lesson around, **find or create related content to exhibit the phenomenon** to your learners. Sometimes videos displaying certain phenomena are easy to find, others you may need to film and edit yourself.

## ④ BUILD YOUR LESSON

1. **Engage/Activate:** Show or allow learners to experience the phenomenon.
2. **Discuss:** Learners should discuss the phenomenon.
3. **Initial Inquiries:** Learners should ask questions about the phenomenon and how it relates to the overall topic
4. **Explore/Investigate:** Learners should engage in an investigation exploring the phenomenon.
5. **Analyze:** Learners should then analyze data collected from the investigation.
6. **Conclude and Relate:** Learners should answer questions requiring them to explain what they've learned and relate it to what they know about the phenomenon.
7. **New Inquiries:** Learners should be encouraged to ask new questions based on their new found knowledge and apply it to other phenomena.